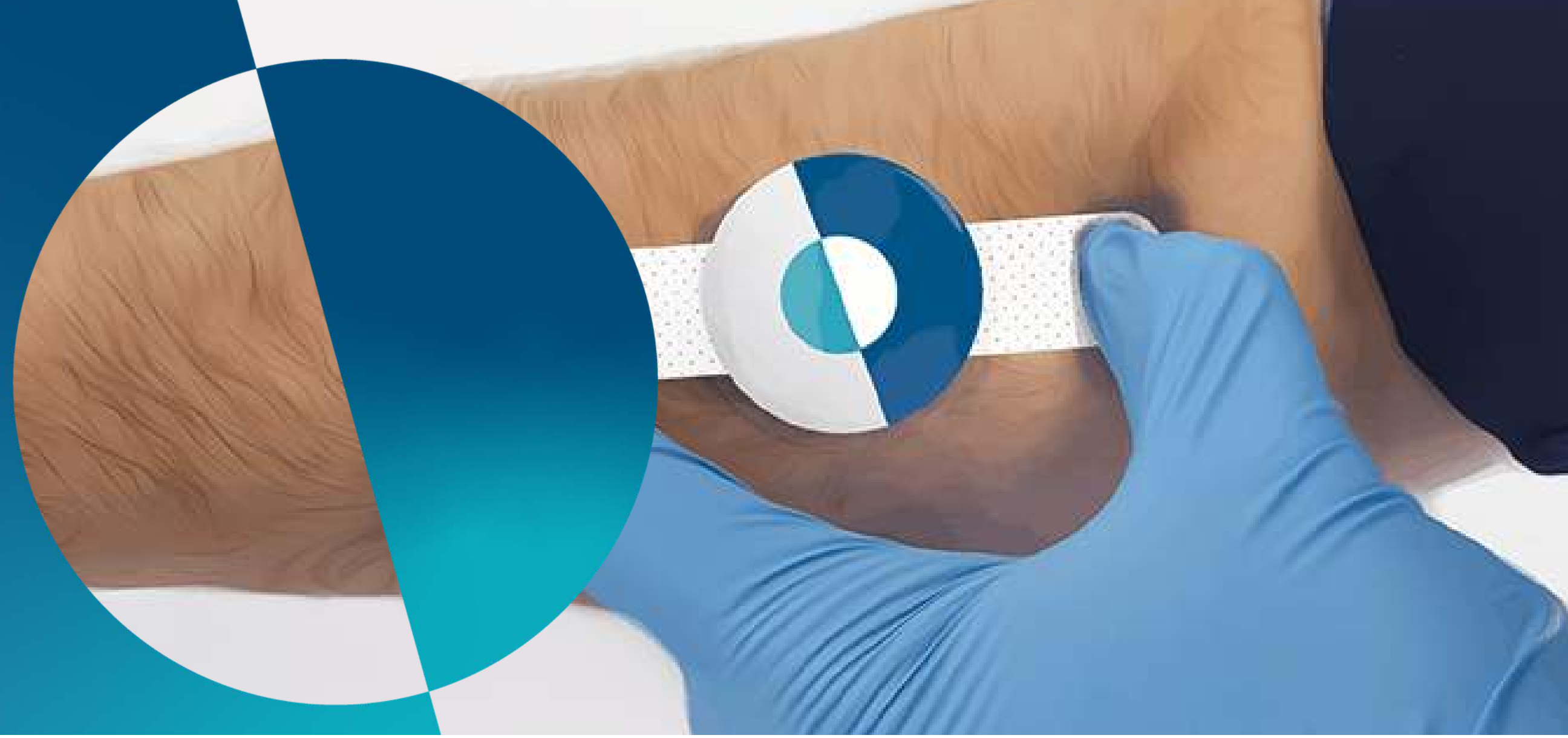


OUR MARKETS



PolarSeal can provide the components needed to develop wearable medical devices, delivering high quality and innovative stick-to-skin solutions.

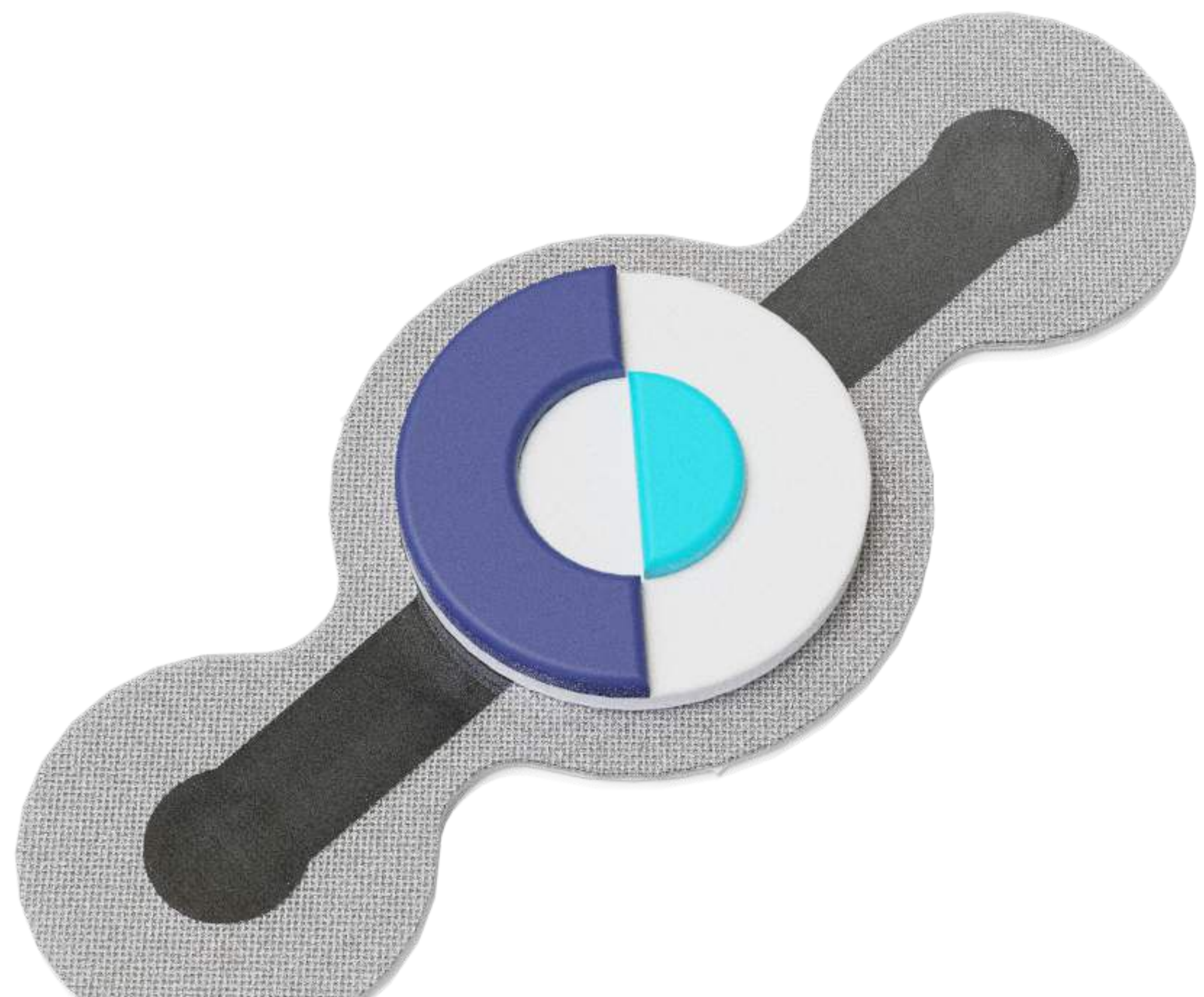
PolarSeal already provides the necessary skin adhering patches in many forms as well as providing the capabilities for diagnostic devices. We work with wearable product companies and designers, taking ideas from initial concepts through to certified, packaged products that work with optimal functionality.

KEY DESIGN FEATURES POLARSEAL PROVIDES SOLUTIONS FOR ARE:

- Wear Duration
- Conformability
- Moisture Resistance and MVTR (Moisture Vapor Transmission Rate)
- Material Conductivity

APPLICATIONS INCLUDE:

- Health and Wellness Monitoring
- Safety Monitoring
- Home Rehabilitation
- Treatment Efficacy Assessment
- Early Detection of Disorders
- Biosensors
- Diabetes Monitoring
- Implanted Device Charging



WEARABLES