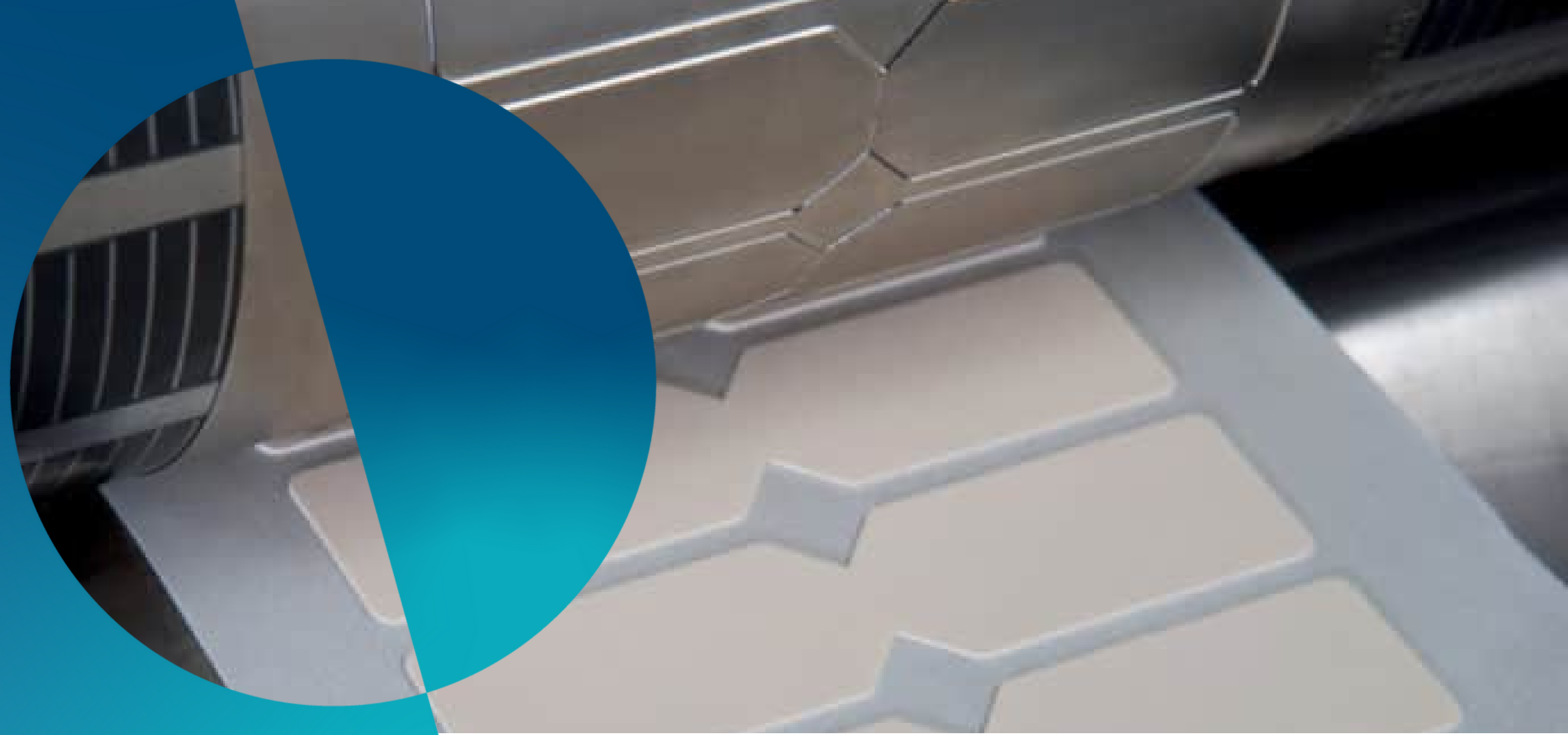
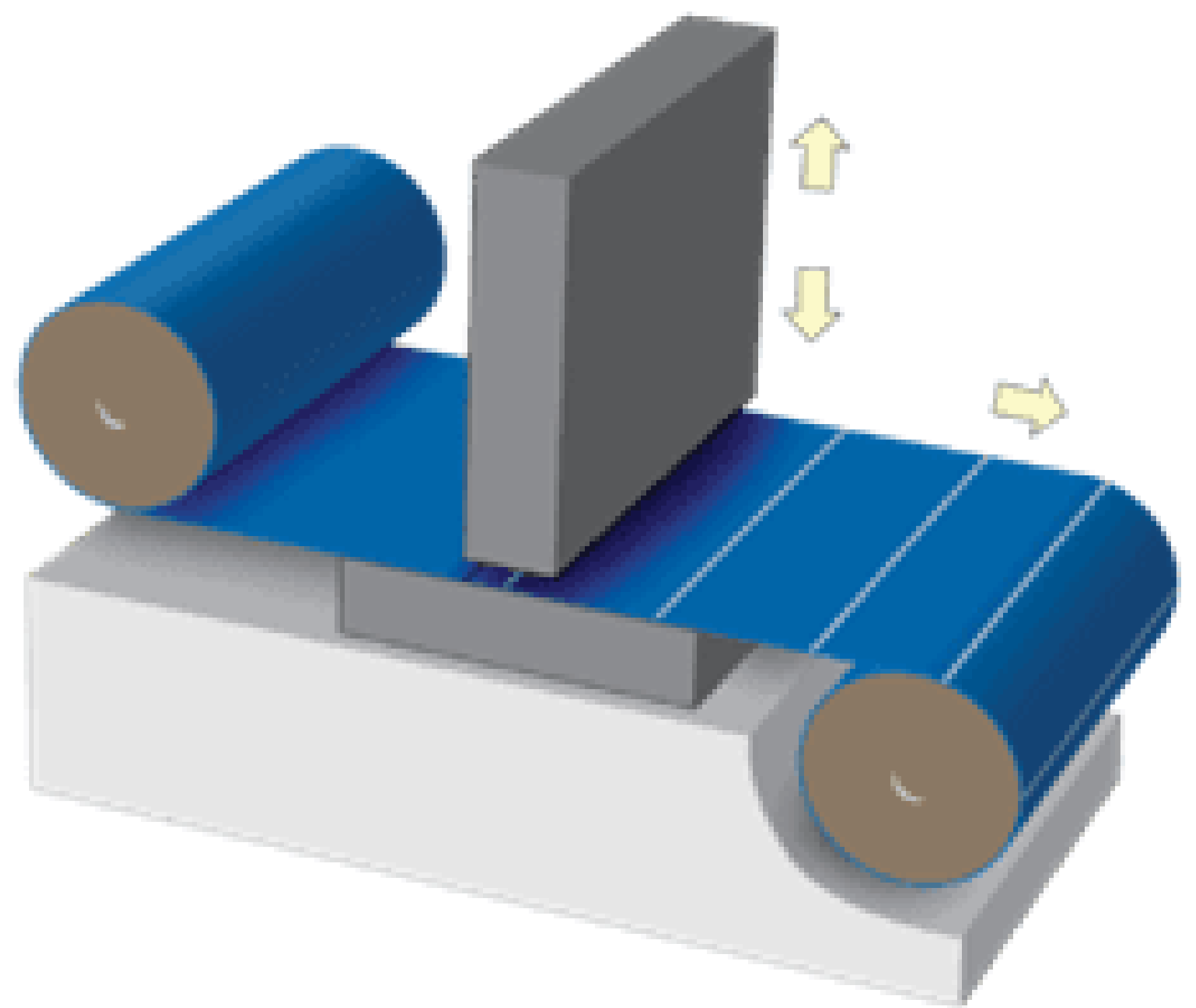


OUR CAPABILITIES



FLAT BED MEDICAL DIE CUTTING

Medical die cutting of all types of self-adhesive and non-adhesive products used in numerous medical device applications is a major part of PolarSeal's production. Presentation is a very important item to be addressed as the correct presentation relative to the product and your manufacturing methods will result in cost-effective, time-saving processes. With over 30 years of experience, PolarSeal will guide you in the choice of individual pieces, roll form, dry edge, split liner, sprocket holed, or other configuration for an efficient engineered part.



- MAXIMUM DIE-CUT SIZE: 1600mm x 800mm

ROTARY MEDICAL DIE CUTTING

The use of high-speed rotary die cutting equipment fitted with an extensive range of innovative capabilities enables us to configure a vast range of medical devices and possibilities in presentation, style, and format. When combined with lamination, multi-layer substrates, printed backing papers, and sheeting in a single pass, the possibilities are truly endless. Final die-cut presentation options include cutting to individual products, sheets, parts on rolls or work-sets. The capabilities also include the perforation of materials to aid breathability and product design.

- MAXIMUM SIZE: 350mm WIDTH x 500mm
- LONG MULTI-TOOL/LAMINATION CAPABILITY WITH REGISTRATION CONTROL, GUILLOTINE, SHEETING AND STACKING UNIT

LARGE FORMAT MEDICAL DIE CUTTING

PolarSeal has the facility to produce very large-scale die-cuts up to 1600mm x 800mm in size. Large and irregular shaped gaskets or masking products are typical items produced in this way.

- MAXIMUM DIE-CUT SIZE: 1600mm x 800mm

DIE CUTTING