

# Medical device prototyping

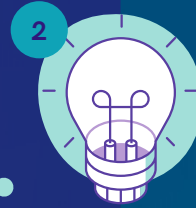
## 1 Requirements

A prototyping model starts with requirement analysis. In this phase, the requirements of the device are defined in detail. During the process, the users are interviewed to know what is their expectation from the device.



## 2 Quick design

In this stage, a simple design of the device is created, it is not a complete design. It gives a brief idea of the device to the user. The quick design helps in developing the prototype.



## 3 Build prototype

In this phase, an actual prototype is designed based on the information gathered from quick design. It is a small working model of the required device.



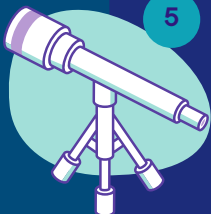
## 4 User evaluation

This stage helps to find out the strength and weakness of the working model. Comments and suggestions are collected from the customer and provided to the R&D team.



## 5 Refine prototype

Based on user feedback, take adjustments suggested to refine the medical device for optimal performance to increase market success.



## 6 Validation and manufacture

Take your device through full quality and operational validation ready for the manufacturing stage.

